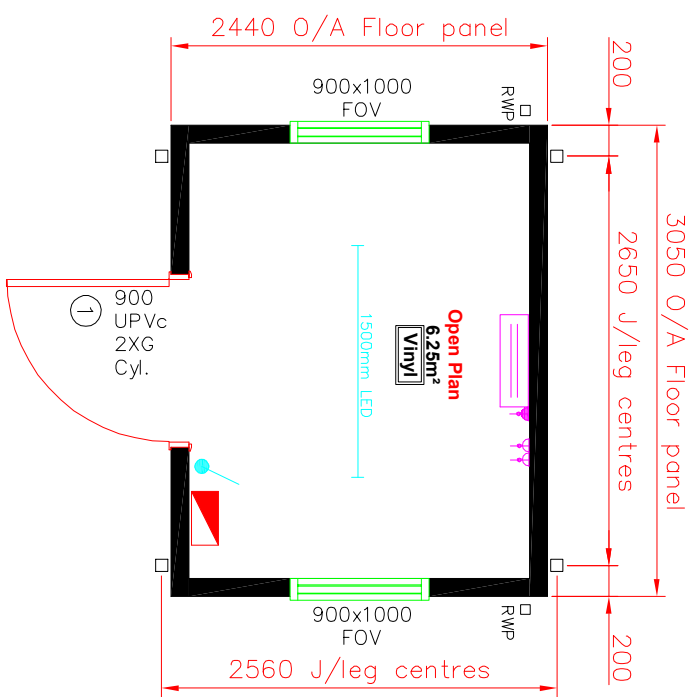
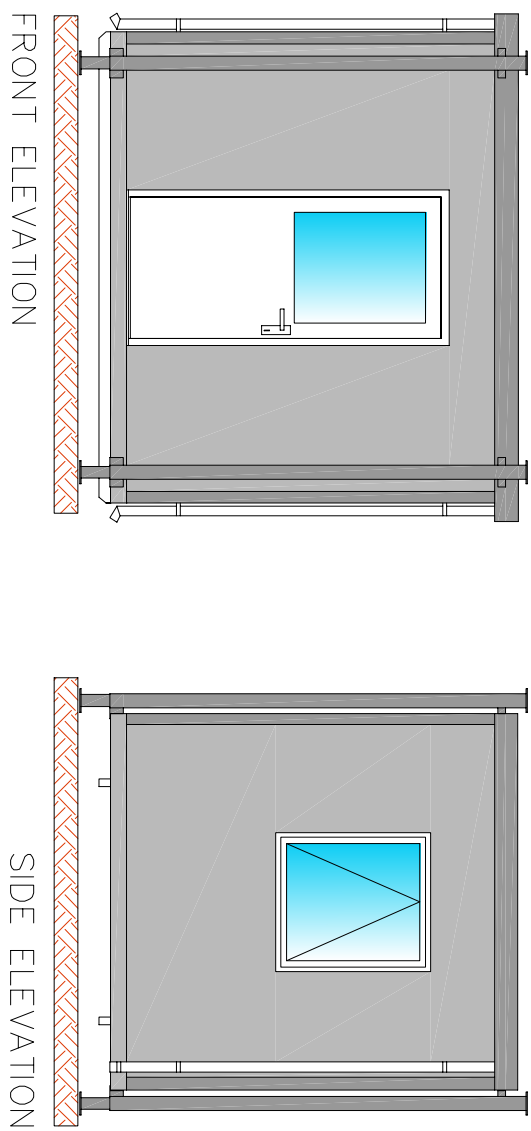


NOTES



- Key:**
- Mains distribution Board
 - Double switched socket outlet low level, 500mm to ct unless stated otherwise
 - Light switch
 - 1500mm single LED light fitting
 - 2KW Panel heater

- Colours & finishes**
- Main Body = Plastisol Goosewing grey 10A05
 - External Door = White UPVc
 - Fascia = Plastisol Merlin grey 18B25
 - Corners = Plastisol Merlin grey 18B25
 - Jackleg colours = Plastisol Merlin grey 18B25
 - Floor Covering = Tarkett Vylon (Vinyl)
 - Rainwater Goods = White square
 - Windows = White UPVc
 - Internal Wall = White vinyl faced plasterboard
 - Internal Ceiling = White vinyl faced plasterboard
 - Internal skirting = White 2 part plastic

Sizes & Heights

Ceiling Height = 2225mm
 Window head height = to line through with door

Title: Plan Layout
 10'x8'

Drawn: MJC Date: 18/09/2020
 Scale: 1:50 Drawing Size: A3

Drawing number: EMB5425-01 Issue: -