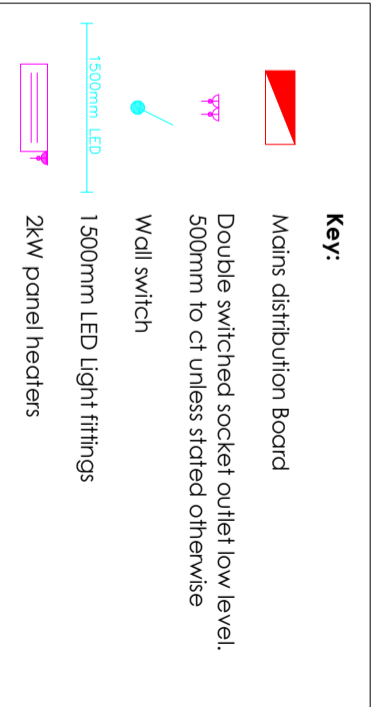
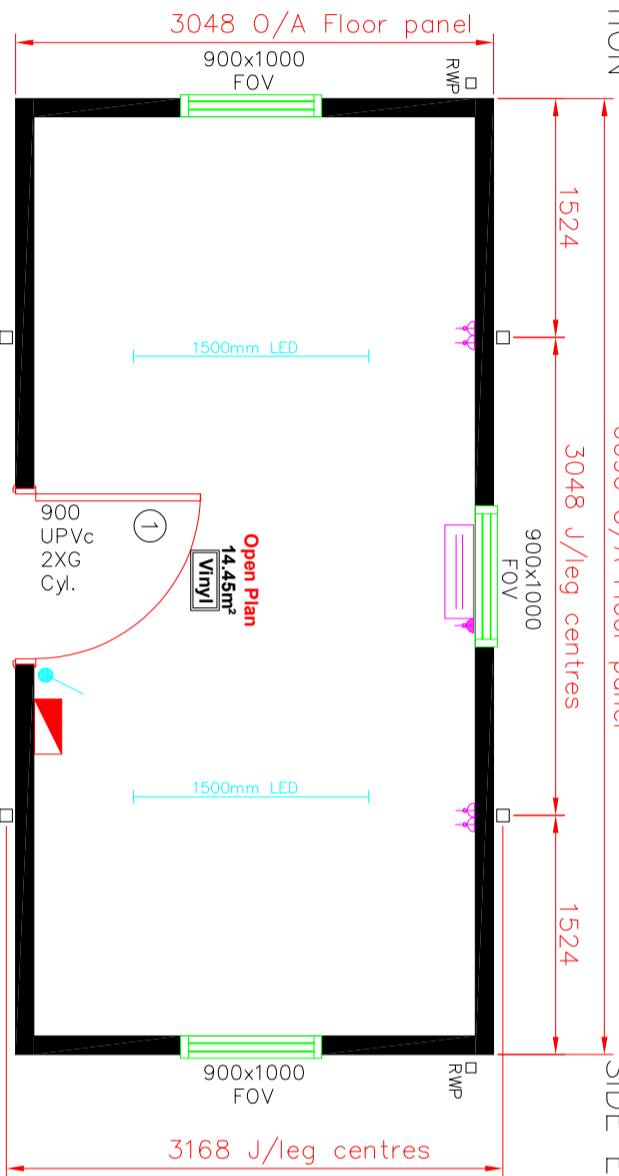
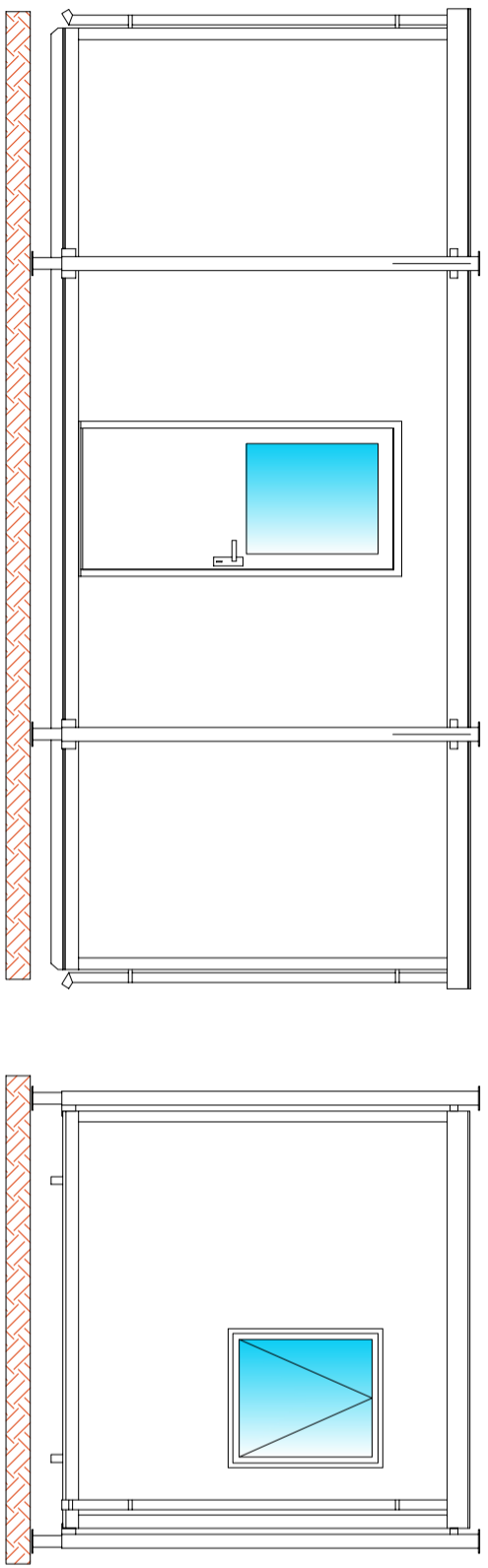


NOTES



Colours & finishes

- Main Body = Plastisol Goosewing grey 10A05
- External Door = White UPVc
- Fascia = Plastisol Merlin grey 18B25
- Corners = Plastisol Merlin grey 18B25
- Jackleg colours = Painted Merlin grey 18B25
- Floor Covering = Polyflor XL Slate grey
- Rainwater Goods = White square
- Windows = White UPVc
- Internal Wall = Cream vinyl faced plasterboard
- Internal Ceiling = White vinyl faced plasterboard
- Internal skirting = White 2 part plastic

Sizes & Heights

- Ceiling Height = 2250mm
- FFL from bottom of steel = 346mm
- Window cill height = 1075mm

By		Date		Rev	
Project		Client			
Title					
Plan Layout					
20'x10'					
Drawn:	MJC	Date	13/04/2018		
Scale:	1:50	Drawing Size	A3		
Drawing number		JL2010-01		Issue	