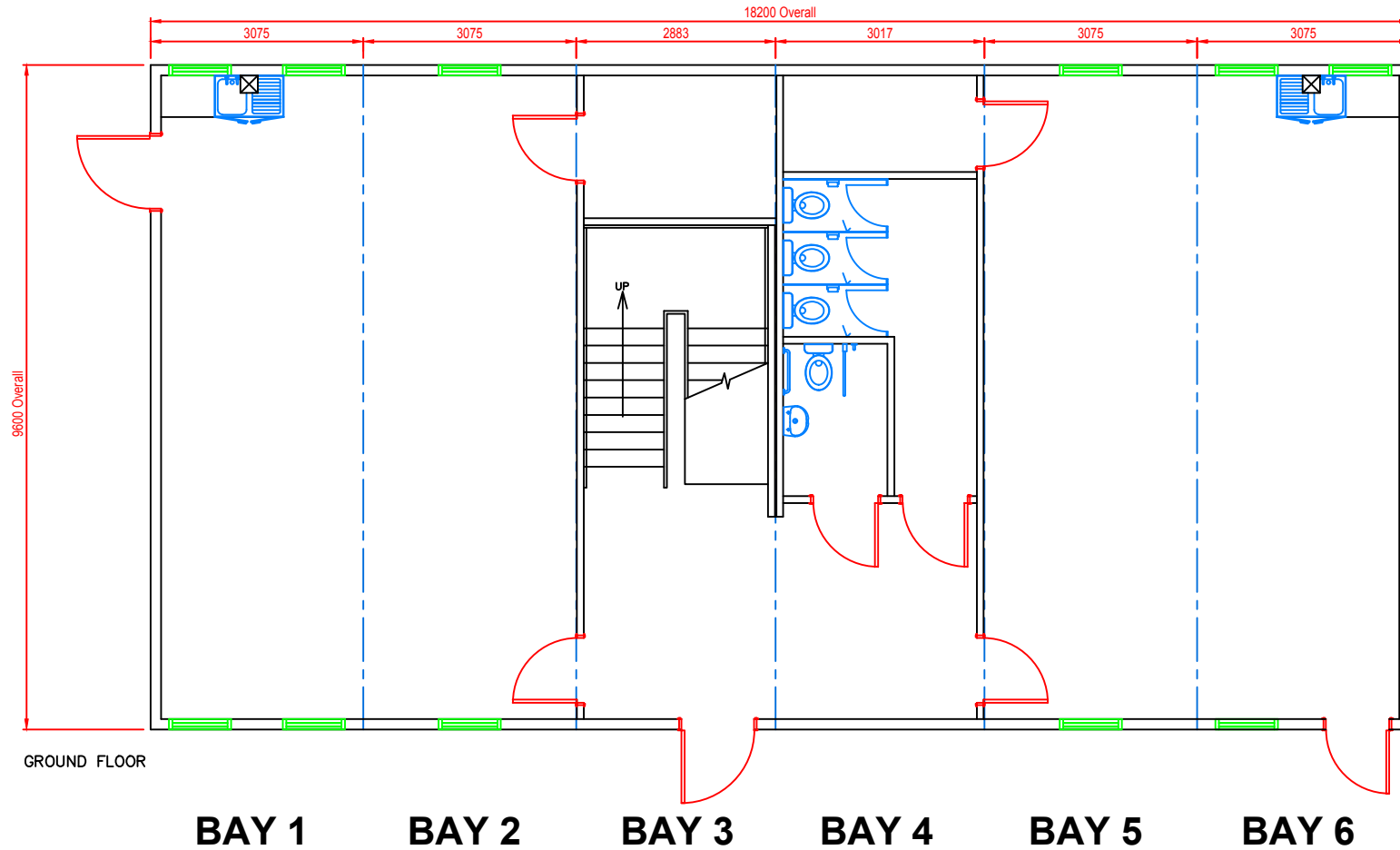


- | | | |
|--|--|---|
| <p>Key: Lights & switching</p> <ul style="list-style-type: none"> Wall switch Ceiling pull switch Emergency lighting 1500mm single fluorescent 1500mm twin CAT 2 20 Bulkhead light Disabled alarm indicator Key: Heaters 2kw convactor heater 2kw fan heater Key: Water Heaters Under sink water storage heater size as dig | <p>Key: Mains, Power & Ventilation</p> <ul style="list-style-type: none"> Mains distribution Board Wall fan size stated & fused spur Ceiling mounted fan Double switched socket outlet low level Double switched socket outlet above worktop Double switched socket outlet trunking mounted Switched fused spur outlet low level Double data outlet 3 compartment trunking 780mm to underside c/w sockets & data outlets Hand dryer | <p>Key: Fire alarm (BS 5837 pt 2)</p> <ul style="list-style-type: none"> Fire alarm panel Smoke detector Smoke detector c/w sounder Smoke detector c/w strobe/sounder Heat detector Break glass call point |
|--|--|---|



By	Date	Rev

Client

Project
Temporary Classroom Accommodation

Title
Plan Layout
6 on 6 Modular Block

Drawn: MJC Date 10/01/2018

Scale: 1:100 Drawing Size A3



Drawing number EMB5258-01 Issue

Drawing Approval
Signed: _____
Date: _____