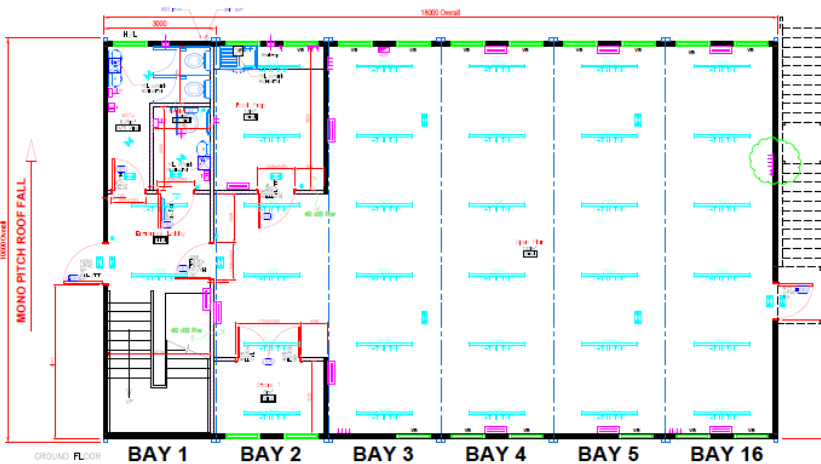
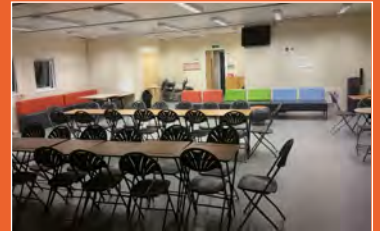


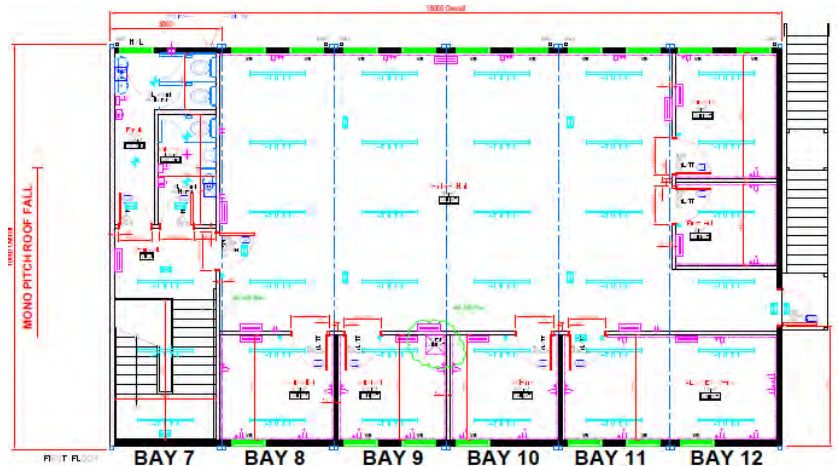
AVAILABLE SUMMER 2020

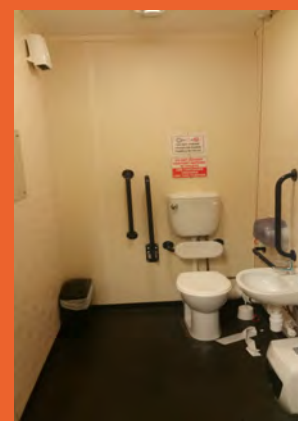
12 Bay Two Storey Modular



Ground Floor Layout

First Floor Layout





12 BAY: Features and Benefits

- Plastisol External Cladding
- Vinyl to Wet Areas
- 2KW Convection Heaters c/w Guards
- Internal and External Staircase
- Plasterboard Lined
- Servacomm Manufactured Building
- UPVC Double Glazed Windows c/w blinds
- Male and Female Toilets to Both Floors

12 BAY 10.8m x 3.0m x 2.7m Ceiling Height

Quote Ref: EMB5191

Contact the office for PDF Layout

AVAILABLE SUMMER 2020

Sited: North London

P.O.A.

Contact us:
sales@excelmodular.co.uk
01482 488664
www.excelmodular.co.uk

